

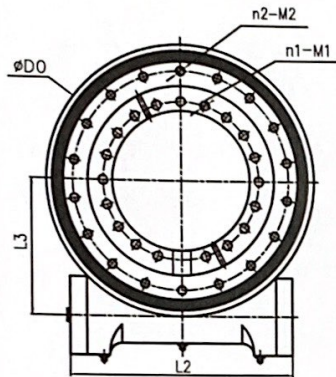
Please note: WEA series has been upgraded to the WEB series.

## ENCLOSED HOUSING SLEWING DRIVE 围栏型回转驱动装置

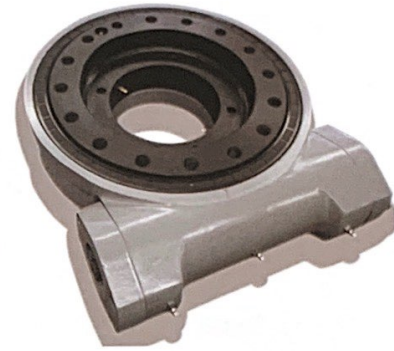
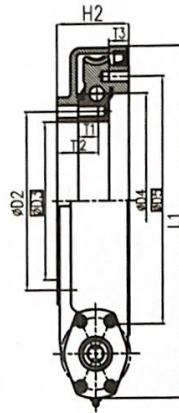
围栏型回转驱动装置主要应用在使用工况要求相对较高的情况下，如对回转结构部分防尘、防雨、防腐蚀等要求较高场合，IP等级达到IP65。  
Enclosed housing slewing drive mainly apply to the relatively high condition for high requirement for dustproof, rain-proof and anti-corrosion occasion. Presion grade IP65.

For detailed drawing, please contact us

详细图纸请联系我们



Input  
输入端



尺寸参数表 DIMENSIONS PARAMETERS

型号 Model	外形尺寸 External Dimensions					安装尺寸 Installation Dimensions					安装孔参数 Mounting Hole Data						
	L1	L2	L3	H2	D0	D2	D3	D4	D5	n1	M1	T1	T2	n2	M2	T3	
	mm									内圈Inner Ring				外圈Outer Ring			
WEA7	344.5	295	142.5	85	276	135	105	175	205	(12-1)	M12	25	41	10	M12	25	
WEA9	424	330	180	108	360	175	146	222.5	270	(16-1)	M16	30	62	16	M16	30	
WEA12	509	370	222.5	108	445	259	229	310	358	(20-1)	M16	30	62	18	M16	30	
WEA14	544	380	240	108	480	295	265	342	390	(24-1)	M16	30	56	18	M16	30	
WEA17	634	405	285	108	570	365.1	332	430	479.4	20	M16	30	60	20	M16	30	
WEA21	762	483	350	130	693	466.7	425	540	584.2	(36-1)	M20	40	70	36	M20	40	
WEA25	861	513	399	130	793	565	525	630	675	(36-1)	M20	40	70	36	M20	40	

注：内圈安装孔个数（n1-1），说明按n1个均布，在减少的安装孔位置打堵塞。

性能参数表 PERFORMANCE PARAMETERS

型号 Model	输出扭矩 (MAX) kN.m Rated Output Torque	倾覆力矩 (MAX) kN.m Tilting Moment Torque	轴向静载荷 kN Static Axial Load	径向静载荷 kN Static Radial Load	轴向动载荷 (MAX) kN.m Dynamic Axial Load	径向动载荷 (MAX) kN.m Dynamic Radial Load	保持力矩 (MAX) kN.m Holding Torque	减速比 Gear Ratio	精度等级 Tracking Precision	自锁 Self-locking Gears	重量 kg Weight
WEA7	3.5	14.2	220	90	63	48	20	47:1	≤0.15°	Yes	35kg
WEA9	8	35.6	578	215	130	110	38.7	62:1	≤0.15°	Yes	53kg
WEA12	9.5	57	760	280	180	140	43	79:1	≤0.15°	Yes	66.8kg
WEA14	10.8	71.2	960	360	220	190	48	86:1	≤0.15°	Yes	75kg
WEA17	12.96	142.4	1160	435	268	220	72.3	104:1	≤0.15°	Yes	96kg
WEA21	28.7	203	1598	640	340	270	105.8	90:1	≤0.15°	Yes	172kg
WEA25	34.2	310	2360	945	440	320	158.3	104:1	≤0.15°	Yes	202kg